

ALL Advisory Leadership Letter



Fall 2007

Newsletter
of the
American
Orff-Schulwerk
Association
Advisory Board

Advisory Board Activities - 2007 AOSA National Conference

by Patty Reed, Region II Representative and Publicity and Public Relations Committee Chair

It's not all play in San Jose for members of the Advisory Board. Local Chapter Presidents use this opportunity to network with other AOSA leaders and to develop skills to successfully lead their chapters.

The Advisory Board Session I is a breakfast meeting for Regional Representatives and Advisory Board members that begins bright and early at 7:00 AM in the Marriott. Breakfast is then followed by the break-out sessions, and this year, members from each Region will meet together to discuss topics suggested in the annual reports.

- Chapter Web sites
- Membership growth and recruiting young leaders
- Ways to encourage urban and rural teachers to become involved in local AOSA chapters
- Working with adults: Conflict Resolution

The Opening Session in the Civic Auditorium follows breakfast and the break-out sessions at 9:30 AM. All Presidents (or a President's designee) will walk together to the Auditorium in preparation for the Banner Roll Call. Don't forget to bring your chapter banner to breakfast – there won't be time to return to your room to retrieve it after the break-out sessions. You will be asked to keep your banner with you and to deliver it to the Convention Center after the Opening Session so that it can be displayed through Saturday morning.

Advisory Board members should plan to attend the Business Meeting on Friday morning at 8:00 AM in the Civic Auditorium. As a leader in your chapter it is very important to be knowledgeable about the business of AOSA. There will also be the invitational skit for the 2008 National Conference to be held in Charlotte, North Carolina. The meeting will conclude with a performance by the Chinese American School under the direction of Susan Kennedy. If you were fortunate enough to see her students perform in Long Beach, you know this performance will be unforgettable.

Saturday morning at 8:00 AM is the Advisory Board Session II, which is only open to Chapter Presidents and Regional Representatives. Past President Sue Mueller promises to make the art of leadership feel like play to participants. You won't want to miss this opportunity to learn and network with fellow advisory board members. Noon on Saturday marks the time when you are asked to come to the Convention Center and pick up your chapter banner. Banners will be taken down during the morning and placed on tables for you to collect.

Finally, the AOSA Regional Representatives invite all Chapter Presidents to visit the Leadership Lounge located in the Sainte Claire Courtyard Atrium. It will be open Thursday through noon Saturday. Visit the lounge to relax, network with other presidents, check out chapter newsletters and displays, have a little snack, and pick up a gift *just*

AOSA
American
Orff-Schulwerk
Association

PO Box 391089
Cleveland, OH
44139-8089
440.543.5366
www.aosa.org



Where was Conference??

1977 - Washington D.C

1987 - Chicago

1997 - Seattle

2007 - SAN JOSE!!

See you there



for you from your Regional Representatives. There will also be a place to drop your ticket for an opportunity drawing, which will be held during the Advisory Board Session II. Ticket holders must be present to win.

We look forward to meeting, working, and “playing” with each one of you. You make it possible for AOSA to reach out to teachers and children everywhere. We thank you for your dedication and leadership!

The new “FIRST TIMER” Conference Orientation

by Jessie Vance and Diane Sabourin, National Conference Chairs – 2008 AOSA National Conference - Charlotte, North Carolina

New this year will be an orientation session for members attending their first AOSA National Conference. It will be held in the Convention Center, room A2, from 10:00 – 10:45 P.M. on Wednesday evening after the Exhibitors’ Reception. There will be signs at Registration and at the First Timers Booth directing First Timers to the orientation. The orientation will give attendees the “lay of the land” and all the “I wish I knew that” information they will need to get the most from their first conference. Please pass this on to first time attendees from your chapter. They will even receive a special gift!

Conference Evaluation Available Online

by Jessie Vance and Diane Sabourin, National Conference Chairs – 2008 AOSA National Conference - Charlotte, North Carolina

Have you ever arrived home from conference to find you had forgotten to turn in your evaluation? Well, here’s an easy way to evaluate conference from the convenience of your home or school computer. Visit www.aosa.org, and click on the link to the Conference Evaluation. You can take a few minutes to fill it in online and with a click, send it on its way. Please pass this along to all conference attendees as the online version will help us tabulate your comments quickly to better serve our members at future conferences.

The IRS and the E-Postcard

by Katharine Johnson, AOSA Executive Director

Many of our chapter presidents have received notice from the IRS that chapters must now file annually. This is a new filing requirement for small nonprofits, the form 990-N, known affectionately at the IRS as the e-Postcard.

Don’t panic! It’s called a “postcard” because the IRS promises that it will be a short and easy electronic form. Plus AOSA Headquarters is here to support you if you do need help with the form. The IRS also has a toll-free hotline dedicated to non-profit organizations (877) 829-5500.

For AOSA Chapters, the e-Postcard is due by November 15 of each year, starting in 2008.

What happens if you don’t file? You risk losing your tax-exempt status! So please take the time to fill out your e-Postcard. The best time to do it would be when you complete your Chapter Financial Statement each year.

Liability Insurance Umbrella for Chapter Workshop Coverage

AOSA carries liability insurance, which covers chapter workshop meetings for all chartered AOSA chapters. If your chapter needs proof of coverage in order to rent meeting space, please contact AOSA Headquarters at (440) 543-5366.



AOSA Welcomes Its New Education Director!

by Joan Stansbury, Region VI Representative and Professional Development Committee Chair

AOSA is pleased to announce the appointment of our first Education Director, Steven Calantropio. Mr. Calantropio is a retired music specialist with 31 years of teaching experience in the River Edge, N.J. public schools. He holds an Orff-Kodaly-Dalcroze Certificate from the Manhattan School of Music as well as an Orff Certificate from the Orff Institute in Salzburg. Steven is well-known and respected throughout AOSA as a national and international clinician, conference presenter, and levels teacher. He also brings outstanding technological and organizational skills to the organization.



As Education Director, Steven will provide a vital link between AOSA and our numerous teacher training programs around the country. His responsibilities will include corresponding with course directors, organizing and maintaining a data base of Teacher Training Course information, and providing a list of approved courses to the membership.

The Orff Echo Editor Search

by Michael Chandler, Region III Representative and Research Committee Chair

The search for an Editor of *The Orff Echo* is well underway with an anticipated appointment date of January 1, 2008. The Search Committee, chaired by AOSA Past President Sue Mueller, represents members of the Editorial Board of *The Orff Echo* Carlos Abril and Martha O'Hehir, contributing author Debbie Headley, Executive Director Katharine Johnson, Vice President and Personnel Committee chair Julie Scott, PPR Committee chair Patty Reed, members of the AOSA National Board of Trustees, and AOSA Industry Member Brent Holl of Beatin' Path Publications, Ltd.

The Committee has identified viable candidates and is in the process of interviewing the candidates by telephone and contacting their references. The selected candidates will be invited to attend the AOSA National Conference in San Jose this November for further interviews with the Search Committee, AOSA President Jo Ella Hug, and the Editorial Board of *The Orff Echo*.

Introducing the Barbara Potter Scholarship Fund

by Pamela Grotegut, Region I Representative and Financial Assistance Committee Chair

The Barbara Potter Scholarship Fund was established by the American Orff-Schulwerk Association in 2007 to honor Barbara Potter for her passion for study at the Orff Institute in Salzburg, Austria. This scholarship, awarded in even-numbered years, offers financial assistance to members of AOSA who wish to study at the Orff Institute in Salzburg. It is reserved for the use and benefit of students pursuing a study of Orff *Schulwerk*.

This is a one-time scholarship for any recipient. The applicant must demonstrate a personal need for financial aid, and must be a current member of AOSA in good standing for one year prior to submitting an application for the scholarship. The applicant must be a citizen of the United States of America OR must have resided in the U.S. for the past five years. Candidates must have successfully completed Level

ON THE AOSA WEB SITE:

[About Us>](#)

[Scholarship information>](#)

[Barbara Potter
Scholarship Fund](#)



*As for the best
leaders, the people do
not notice their
existence.
The next best, the
people honor and
praise.
The next, the
people fear;
and the next, the
people hate ...
When the best
leader's work is done
the people say,
"We did it ourselves!"
- Lao-tsu*



III Orff *Schulwerk* training. Upon receipt of this scholarship, the recipient agrees to write an article for an AOSA publication, provide documentation of how the award was used, and serve AOSA in a capacity commensurate with his or her expertise.

Inquiries/requests for application forms should be directed to AOSA Executive Headquarters, www.aosa.org, or info@aosa.org. The deadline for submitting applications is January 25th, 2008.

Did You Know?

by BethAnn Hepburn, Region VI Representative

Reverberations needs your chapter news and photos! We encourage you to share honors or awards recognizing your chapter members, as well as news about your chapter's special occasions. Reading news from other chapters can give you ideas for your own. Please submit your chapter news and photos to Jessie Vance at reverberations@aol.com.

- Do you have a "buddy chapter"? Great things can happen when established chapters help newer chapters with advice. Please contact your Regional Representatives to find out how you can lend or receive help.
- Do you know your Regional Representatives? They're a great resource for you, so contact them for advice or with questions and concerns. They're here to help you and your chapter!
- "Nonprofit" doesn't mean "no-profit"! Chapters may raise funds and earn income from membership dues and workshop fees and through fund raisers. There is no cap on the amount a chapter may earn per year.
- There are chapter grants available from AOSA for new chapters and for chapters that have been established for longer than three years. Please e-mail AOSA headquarters for an application if your chapter needs financial assistance to host a workshop.
- All donations to AOSA are tax-deductible.
- AOSA member Tossi Aaron designed the AOSA logo.

You can access previous issues of the *ALL*. Go to www.aosa.org, click on the "Membership and Local Chapters" button, and scroll down to the past issues of the *ALL*.

- To hyphenate or not to hyphenate? This is a common question, and here is the answer: "Orff *Schulwerk*", the approach, is not hyphenated, however, when referring to our national organization, The American Orff-*Schulwerk* Association, please use the hyphen. This designates the correct title.

Many chapters have begun to hold special meetings during their state's music educator conference such as an evening *meet-and-greet* or to host/sponsor a clinician. Does your chapter connect with your state organizations? This is a great way to let people know your chapter is out there!

Upcoming Elections

by Jill Peck, Region II Representative and Leadership Development Committee Chair

A number of positions on the AOSA National Board of Trustees are open for elections this year. The candidates listed below were selected following the recent NBT meeting in Cleveland, Ohio last September. AOSA would like to thank each candidate for their willingness to serve our organization at the national level. As part of the AOSA Advisory Board, we encourage **you** to consider how you too can serve AOSA at this level. Moreover, if you know of someone else in your chapter with ex-



Region I



Judy Sapegin



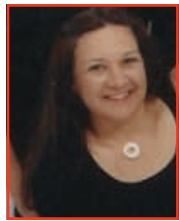
Sue Schultz

emply leadership skills, please let your Regional Representatives know about them either with an e-mail, a phone call, or a personal chat at conference. There's also a place on the chapter annual report form to indicate names you'd like to suggest for those whom you believe to have special leadership skills.

Congratulations to these candidates! Come meet them all and wish them luck at the AOSA Business Meeting on Friday morning of conference at 8:00 AM in the Civic Auditorium! Election results will be released in February 2008.

- **Region I:**
Sue Schultz (Evergreen Orff Chapter - Washington)
Judy Sapegin (Rocky Mountain Chapter - Colorado)
- **Region II:**
Rossana Cota (Nevada's Desert Valley Chapter - Nevada)
Paula Van Houten (Los Angeles Chapter - California)
- **Region III:**
Ruth Aguirre (Central Texas Orff Chapter - Texas)
Sally Trenfield (Rio Grande Valley Chapter - Texas)
- **Region VI:**
Amy Fenton (Mid-Michigan Chapter- Michigan)
Kathleen Hummel (Greater Chicago Chapter - Illinois)
- **AOSA Recording Secretary:**
LuAnn Hayes (Kentucky Chapter)
Kay Lehto (Nevada's Desert Valley Chapter - Nevada)

Region II

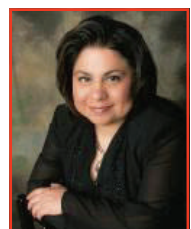


Rossana Cota



Paula Van Houten

Region III



Ruth Aguirre

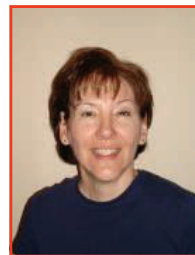


Sally Trenfield

Region VI

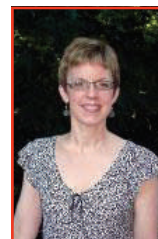


Amy Fenton

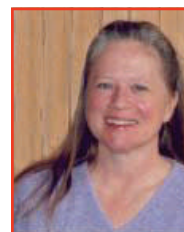


Kathleen Hummel

Recording Secretary



LuAnn Hayes



Kay Lehto